



capital
WOMEN
in PHILANTHROPY

2026
CIRCLE OF CARE



capitahealth
Foundation



The Advisory Committee of
CAPITAL WOMEN IN PHILANTHROPY
cordially invites you to the

CIRCLE OF CARE

presenting the

CAPITAL WOMEN GRANT RECIPIENTS

THURSDAY, MAY 14, 2026 | 5 P.M.

The Boathouse at Mercer Lake
334 S. Post Road
West Windsor, NJ 08550






capital WOMEN

in PHILANTHROPY

Nearly 19 years ago, a group of talented and vested women joined together to support and promote Capital Health's services and programs with a specific interest in improving the health and well-being of the populations we serve in urban and suburban communities. This founding group established Capital Women in Philanthropy (CWP). In its inaugural year, CWP granted \$43,000 supporting seven worthy funding proposals.

Today, Capital Women in Philanthropy proudly welcomes over 100 members who represent friends from far and near, as well as Capital Health physicians, nurses and allied healthcare professionals and employees. Over \$868,000 in pooled philanthropic support has been directed to CWP's Annual Grants program seeding new and existing programs and services.

All CWP gifts of support have a significant impact on Capital Health's role as the region's provider of choice delivering exceptional, innovative, and compassionate care.



CAPITAL WOMEN IN PHILANTHROPY 2026 GRANT RECIPIENTS

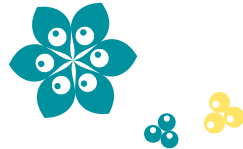
ADVANCING CLINICAL TRAINING THROUGH SIMULATION (ACTTS)

Simulation Education
*Capital Health Medical
Center – Hopewell*

BE SAFE BE SEEN

Bristol Myers Squibb
Trauma Center
*Capital Health
Regional Medical Center*

COMFORT CART:



SUPPORTING FAMILIES THROUGH SUDDEN LOSS AND UNEXPECTED MEDICAL EMERGENCIES

Nursing
*Capital Health Medical
Center – Hopewell and Capital Health
Regional Medical Center*

PARENT SUPPORT INITIATIVE: AFTERNOON TEA SERVICE IN THE NICU

Neonatal Intensive Care Unit
*Capital Health Medical
Center – Hopewell*



SUPPORT AND EDUCATION
FOR THE HISPANIC
POPULATION SERVED
BY THE COMMUNITY
HEALTH CLINIC

Internal Medicine
Residency Program

Capital Health Family Health Center

SAFE START —
CAR SEATS FOR MERCER
COUNTY FAMILIES

Bristol Myers Squibb
Trauma Center

Capital Health

Regional Medical Center

PROJECT SOLVED:
UNLOCKING POTENTIAL
THROUGH PROJECT
MANAGEMENT TRAINING

Emergency Departments

*Capital Health Medical Center –
Hopewell, Capital Health Regional
Medical Center, and Capital Health at
Deborah – Emergency Services*

PROMOTING MEDICATION
ADHERENCE THROUGH



CAPITAL HEALTH

SAMUEL J. PLUMERI, JR.

Chairman, Capital Healthcare, Inc., Board of Trustees, Foundation

SEAN S. MURRAY

*Chairman, Capital Health Hospital, Board of Directors
Treasurer, Capital Healthcare, Inc., Board of Trustees
Vice Chairman, Capital Health Foundation*

AL MAGHAZEHE, PHD, FACHE

Capital Health President and CEO

Capital Women In Philanthropy Advisory Committee

Randi A. Axelrod, MD, FAAP

Carolann Besler

Barbara Brennfleck

Deepika Choudhri, PharmD

Catherine P. Durkin

Sandra Furness

Carolyn J. Gaukler, MD

Leslie Gibbons

Harriet H. Jahr-Philips, LMT,
CLT, S4OM

Gail M. Johnson, RN, MSN, EdD

Margaret K. Kramer

Vera Kunte, DNP, APN-C

Robin M. Lacorazza

Gail Ann Palatine

Joan A. Panacek

Nancy D. Praznoski, MA, BSN, RN

Stacey Shah

Virginia Stemhagen

Margaret Sudhakar, MS

JENNIFER M. ANTINORO, MHA, MSW, CFRE

Vice President, Guest Relations & Philanthropy

For additional information, please contact
Capital Health Foundation at 609.303.4121.