

YOUR SURGERY IS IMPORTANT.

As a regional leader in robotic-assisted hepato-pancreato-biliary (HPB) surgery, we offer you the latest in technology and the most advanced care.

At Capital Health, we proudly offer patients minimally invasive, robotic-assisted surgery using the da Vinci Xi® surgical system. It is a state-of-the-art alternative to both traditional open surgery and conventional laparoscopic surgery.

Our highly skilled specialized surgeons utilize this advanced technology to treat a wide range of hepato-pancreato-biliary (HPB) conditions – including benign and cancerous tumors. Patients typically experience a faster recovery time and are able to return to their normal activities sooner.



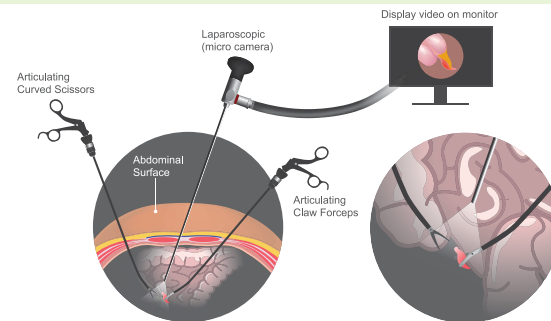
AN EXPERIENCED LEADER IN ADVANCED CARE

Capital Health is committed to providing the latest technologies, advanced treatment options, and highly skilled surgeons in the region. We are recognized as the regional leader in providing high-quality health care and for continuously pursuing new avenues for diagnosis and treatment.

We continue to be at the forefront of minimally invasive surgery since we began using the da Vinci surgical system in 2008. Since that time, our specialized surgeons and expertise has expanded to include the areas of hepato-pancreato-biliary, gynecological, urological surgeries, and more complex procedures.

MINIMALLY INVASIVE SURGERY

Compared to traditional surgical techniques, like open surgery, laparoscopic surgery (or minimally invasive surgery) means large open incisions are no longer necessary. Instead, surgeons access the treatment area through small 5 to 12 mm incisions utilizing miniaturized cameras and surgical instruments. This fosters faster healing and a shorter recovery period for patients.



DA VINCI ROBOTIC-ASSISTED SURGERY

The da Vinci Xi® surgical system provides technological advances such as high-powered magnification and sophisticated tools. It utilizes advanced robotic, computer and optical technologies to assist your surgeon during your operation. Its 3-D high-definition vision system and powerful magnification enables your surgeon

Minimally Invasive, Robotic-Assisted Hepato-Pancreato-Biliary Surgery

To schedule a consultation with

DR. CATALDO DORIA
Medical Director,
Capital Health Cancer Center

call 609.537.6000 or visit
capitalsurgical.org for more information.



A QUALITY PROGRAM
of the AMERICAN COLLEGE
OF SURGEONS



capitalhealth

capitalhealth.org/davinci

@capitalhealthnj     

1/2020



MINIMALLY INVASIVE, ROBOTIC-ASSISTED HEPATO-PANCREATO- BILIARY SURGERY



capitalhealth

capitalhealth.org/davinci

to have a crystal-clear, highly magnified view of your body's anatomical structures for precise surgical procedures.

While described as "robotic-assisted," the da Vinci surgical system does not act on its own – your surgeon is in full control of all instruments and movements at all times.

During your procedure, your surgeon will sit next to you at a console. Capital Health's investment in a dual console allows for a second surgeon to provide assistance. Through a few small incisions, the robotic system translates your surgeon's hand movements into precise, real-time movements of tiny instruments within your body. This allows for very precise dissections, delicate suturing, and the ability to maneuver in very small and sometimes challenging spaces.



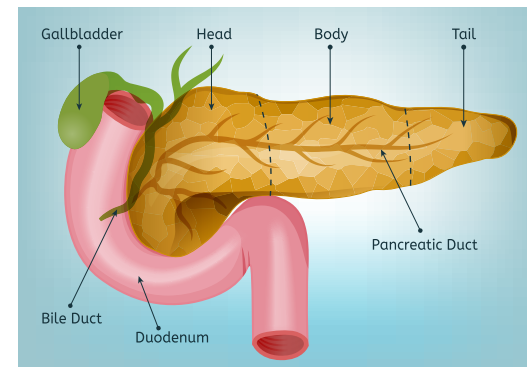
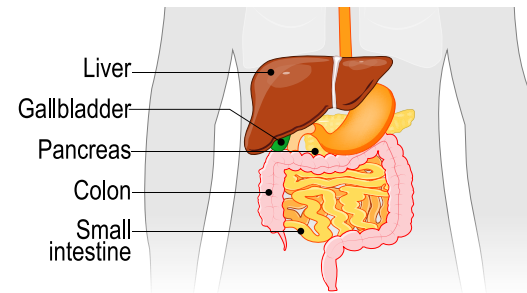
PATIENT BENEFITS

Compared to traditional surgery techniques benefits experienced by patients may include:

- Faster recovery
- Faster return to normal daily activities
- Fewer complications/reduced risk of infection
- Less blood loss
- Less pain
- Smaller incisions
- Minimal scarring
- Shorter hospital stay

YOUR PANCREAS

Located behind and below your stomach, the pancreas is part of your digestive system. It plays an important role in digestion by secreting enzymes that aid in food digestion and it produces insulin and glucagon needed to regulate your blood sugar levels. The pancreas is comprised of four main parts: head, neck, body, and tail. Common conditions include pancreatitis and pancreatic cancer.



PANCREATIC CANCER

Pancreatic cancer begins when abnormal cells grow out of control and form a tumor. Pancreatic cancer is difficult to diagnose because symptoms are vague and often appear after the cancer has advanced. Symptoms range from abdominal or back pain, weight loss, jaundice, severe itching, abdomen bloating, stool changes, diabetes onset, or digestive problems such as loss of appetite, indigestion, and nausea.

HEPATO-PANCREATO-BILIARY PROCEDURES WITH DA VINCI

Capital Health's surgical experts can use robotic-assisted technology during many liver, pancreas, and biliary procedures:

- LIVER MASSES
 - Minor liver hepatectomies (less than four liver segments)
 - Major liver hepatectomies (four or more liver segments)
- PANCREATIC CANCER
 - Pylorus preserving pancreatoduodenectomy (PPPD)
 - Whipple procedure
 - Distal pancreatectomy
 - Central pancreatectomy
 - Total pancreatectomy
 - Pancreatic cyst enucleation
- BILE DUCTS
 - Cholecystectomy
 - Common bile duct procedures

IS ROBOTIC-ASSISTED SURGERY RIGHT FOR YOU?

Robotic surgery may be used in a multitude of procedures, but not for all conditions. If you are not a candidate for minimally invasive surgery, robotic-assisted surgery may not be suitable for you. You should discuss all treatment options as well as the associated risks and benefits with your physician and surgeon to determine what treatment is best for you.



INSURANCE COVERAGE

Robotic surgery is categorized as robotic-assisted minimally invasive surgery. Generally, if your insurance (including Medicare) covers minimally invasive surgery, it will cover this surgery. Consult your insurance company, as your coverage may vary depending upon your plan.

CONSULTATIONS AND REFERRALS

New patients or their referring physicians are encouraged to contact us about available treatment options, including da Vinci robotic-assisted surgery, and all associated risks and benefits. We will be happy to discuss your diagnosis and treatment options so you can make an informed decision.

DISCLOSURES: All surgeries contain risk and the potential for complications. Patients should consult with their physician to understand all surgical and non-surgical options and risks in order to make an informed decision as to what treatment option is best for them.

As with any surgery, complications may occur including (but not limited to) extended hospitalization, bleeding, infection, scarring, or injury to tissue or organs. Patient outcomes may depend on a number of different factors.

da Vinci Xi® is a registered trademark of Intuitive Surgical, Inc.