



LIVER CENTER OF EXCELLENCE



capitahealth

CANCER CENTER

capitalhealth.org/cancer




WELCOME



At the Capital Health Liver Center of Excellence, patients have access to world-class care delivered by medical experts who are highly experienced in diagnosing and treating a full range of liver diseases. The Center also provides cutting-edge treatments and sophisticated technology, all in a state-of-the-art facility that is conveniently located close to home for patients in central New Jersey and Bucks County, Pennsylvania.

The Liver Center of Excellence is led by Dr. Cataldo Doria, an internationally renowned hepato-pancreato-biliary surgeon and the region's foremost expert in diseases that affect the liver, pancreas, and bile duct. Dr. Doria is also the medical director of Capital Health Cancer Center, where he has made significant advances in cancer care and research that have improved care and outcomes for patients around the world.



LIVER CLINIC

To facilitate rapid and thorough evaluations for patients and their loved ones, our multidisciplinary team of medical experts designed a clinic that is devoted exclusively to diagnosing liver conditions. This streamlined approach reduces the need to make and manage multiple appointments with different providers on different dates.

During your visit, you will meet one-on-one with clinicians who specialize in liver conditions for a thorough medical assessment and a discussion about your condition. After your visit, our team will provide an accurate diagnosis and information about the leading-edge treatment options that are available. Working closely with your referring physician, you and your health care team will develop a personalized plan for treatment and ongoing care.



EXPERT CARE FOCUSED ON YOU

Your multidisciplinary team of liver specialists provides personalized, integrated care through a comprehensive plan that is designed exclusively for you. Each week, the team meets to discuss your care plan, review your progress, and modify your plan as needed.

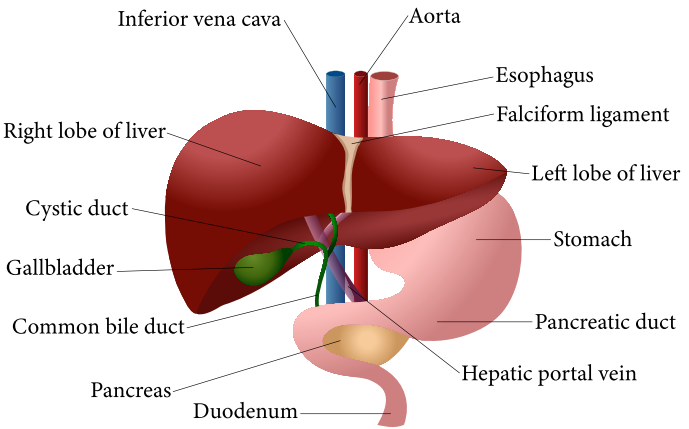
Our Liver Center of Excellence team includes experts in:

- ... Liver surgery
- ... Liver transplantation
- ... Hepatology
- ... Interventional radiology
- ... Radiation oncology
- ... Hematology oncology
- ... General gastroenterology
- ... Interventional gastroenterology
- ... Pathology
- ... Nurse navigation
- ... Nutrition
- ... Clinical trials
- ... Support services
- ... Integrative medicine
- ... Support groups
- ... Survivorship

EXCEEDING EXPECTATIONS

A cancer diagnosis can be overwhelming, which is why convenience, comfort and best practices for quality and safety are at the heart of our services and amenities. From survivorship and wellness programs to support groups and free valet parking, everything is designed to make your journey easier.

ANATOMY OF THE LIVER



- The liver performs many functions, including filtering blood, making bile (which helps break down food, drugs and fats), producing cholesterol, converting glucose, processing hemoglobin, and more.
- The gallbladder holds and concentrates the bile made by the liver until it is needed.
- Bile ducts transport bile from the liver to the small intestine.

LIVER CANCERS

The most common liver cancer is metastatic, which is cancer that spreads from another area (such as the colon, breast, or lung) to the liver. Site-specific cancers include hepatocellular carcinoma, gallbladder cancer, and bile duct cancer.

RISK FACTORS

According to the American Cancer Society, approximately 70% of those newly diagnosed with liver/intrahepatic bile duct cancer are male. People of Asian American or Pacific Islander descent are also at higher risk of developing liver cancer. Other known causes of liver cancer include hepatitis B and hepatitis C infections, and liver cirrhosis. Controllable risk factors include heavy alcohol use, smoking and obesity.



DIAGNOSING YOUR CONDITION

Testing provides important information in assessing your condition, staging a cancer diagnosis, and developing your treatment plan. Patients at our Liver Center of Excellence have convenient access to the latest imaging and diagnostic technology under one roof at Capital Health Medical Center – Hopewell, including:

- ... Ultrasound
- ... CT
- ... MRI
- ... Alpha-fetoprotein (AFP),
carcinoembryonic antigen (CEA),
as well as other tumor marker tests
- ... Genetic studies
- ... Personalized medicine
- ... Liver biopsy
- ... GI endoscopy (esophagogastroduodenoscopy)
- ... Endoscopic ultrasound (EUS)
- ... Endoscopic retrograde
cholangiopancreatography (ERCP)
- ... Cholangioscopy



TREATMENT OPTIONS

Through the Capital Health Cancer Center, you will have access to leading-edge treatment options in a state-of-the-art facility. Depending on your personalized care plan, your treatments may include:

- ... Surgery (liver resections)
- ... Surgical treatment of portal hypertension
- ... Liver transplantation
- ... Interventional liver-directed therapy
- ... CyberKnife® stereotactic body radiation therapy (SRS SBRT)
- ... Chemotherapy
- ... Immunotherapy
- ... Endoscopic therapy
- ... Surveillance

EXPANDING TREATMENT OPTIONS

Our commitment to improving patient outcomes and quality of life drives us to continuously advance care through state-of-the-art talent and technology.

Ex-Vivo Liver Resection with Liver Auto-Transplant

Patients diagnosed with multiple liver masses who are not candidates for traditional surgery may be eligible for ex-vivo liver resection with liver auto-transplant. In this procedure, our surgeons take the liver from the body, remove the cancer, reconstruct the liver vasculature, and transplant a portion of the liver back into the patient's body.

Bloodless Liver Surgery

Where traditional liver surgery with a scalpel requires up to 10 units or more of blood, bloodless liver surgery employs an ultrasonic device to suction out liver cells, immediately followed by a probe that uses hot, sterile water to seal the liver's blood vessels upon contact. Surgical and recovery times are significantly reduced and most patients completely recover within a month.

Minimally Invasive Robotic-Assisted Surgery

For appropriate candidates, minimally invasive robotic-assisted surgery by our specially trained surgeons using the **da Vinci® surgical system** means smaller incisions, fewer complications, and a faster recovery for patients. This enables patients to resume normal activities more quickly than they would after traditional open surgery.

Interventional liver-directed therapy such as TheraSphere™ is selective internal radiation therapy (SIRT) that uses millions of microscopic glass beads containing radioactive yttrium (Y-90) to deliver radiation directly to cancer cells in the liver to shrink and destroy tumors. Typically offered on an outpatient basis, treatment is administered through a catheter placed in a large artery at the top of the leg.

CyberKnife® is an image-guided radiosurgery system that delivers radiation to tumors located anywhere in the body with pinpoint accuracy, avoiding damage to surrounding healthy tissue. It is considered a non-surgical outpatient procedure that is typically pain-free and does not require anesthesia.

Transjugular intrahepatic portosystemic shunt (TIPS) is a procedure that may be used to treat patients experiencing portal hypertension (high blood pressure in the veins that carry blood from the intestines to the liver) due to cirrhosis. During a TIPS procedure, a stent is placed into a liver vein to form a channel (or shunt) that bypasses the liver and reduces pressure in the portal vein, thus lowering the risk of ruptures and bleeding in enlarged veins (varices).

For patients experiencing enlarged veins (varices) in the esophagus who are not candidates for a TIPS or liver transplantation, we also perform selective and non-selective surgical shunts to treat these conditions.

Selective and Non-Selective Shunts

Selective shunts divert only a portion of portal blood flow into the general circulation to reduce blood pressure. Non-selective shunts divert all portal blood flow into the general circulation.



COLLABORATION

For patients who need a liver transplant, our affiliation with Temple University Hospital for liver transplant and advanced surgical services streamlines your care and minimizes the amount of travel required. Patients receive liver transplants at Temple, but pre- and post-transplant care and related diagnostic tests can be done close to home here at Capital Health. Similarly, patients who are candidates for bloodless liver surgery and liver auto-transplant surgery will receive their procedures at Capital Health but will receive pre- and post-surgery care and related diagnostic tests close to home at Temple.

In research, Capital Health is collaborating with Baruch S. Blumberg Institute, the nation's leading non-profit translational research organization dedicated to finding a cure for the hepatitis B virus and liver cancer. Together, we are testing novel ideas and developing innovations in liver cancer treatment.

CLINICAL TRIALS

In addition to the highly specialized liver care services offered at the Liver Center, we participate in clinical trials to help find cures and develop promising new treatments for liver cancer. If you are interested in participating in a clinical trial, please consult with your physician.

MEET OUR TEAM



**Cataldo Doria, MD,
PhD, MBA, FACS**
Medical Director,
Capital Health Cancer Center
Hepato-pancreato-biliary Surgery



Waseem Butt, MD
Capital Health –
Gastroenterology Specialists,
Hepatology



Ajay Choudhri, MD
Chairman and Medical Director,
Capital Health Department
of Radiology



Timothy H. Chen, MD
Medical Director,
Stereotactic Radiosurgery



Hongyan Liang, MD

Capital Health – Hematology
Oncology Specialists



Armen J. Simonian, MD

Medical Director,
Capital Health Center for
Digestive Health



Jason N. Rogart, MD, FASGE

Director, Interventional
Gastroenterology and
Therapeutic Endoscopy



Carolyn Gaukler, MD

Director, Palliative and
Supportive Care

LIVER CENTER OF EXCELLENCE

To make an appointment,
for more information, or to
refer a patient, please call

888.4.LIVER.0
(888.454.8370)



capitalhealth

CANCER CENTER

Capital Health Cancer Center
One Capital Way, Pennington, NJ 08534

capitalhealth.org

@capitalhealthnj     