



October 4 - October 19

Hope is in the bag

Shop for Hope. **Shop to Help.**

DEVELOP PARTNERSHIPS | JOINT ADVERTISING | SPECIAL EVENTS | WEB BANNER LINKS
JOIN TOGETHER ON SOCIAL MEDIA | SHOP LOCALLY | MAKE A DIFFERENCE

WHAT IS HOPE IS IN THE BAG?

Since 2014, **HOPE IS IN THE BAG**, an annual shopping and dining campaign, has been supporting women (and men) in our community whose lives have been touched by breast cancer.

Join Capital Health and the Center for Comprehensive Breast Care to raise awareness on the importance of early detection and raise funds that will support those who are cared for at our Center.

[Click here](#) for a Hope Partner registration form.

WAYS TO INCLUDE YOUR BUSINESS!

If you have any questions,
please contact **Joanne McGann**
609.303.4346 · jmcgann@capitalhealth.org



RETAIL | **Organize Your Own Event**

- Host a shopping event for customers
- Sell special products or services
- Donate percentage of proceeds



PROFESSIONAL SERVICES | **Join the Cause**

- Support by reaching out to customers and clients
- Donate by raising funds



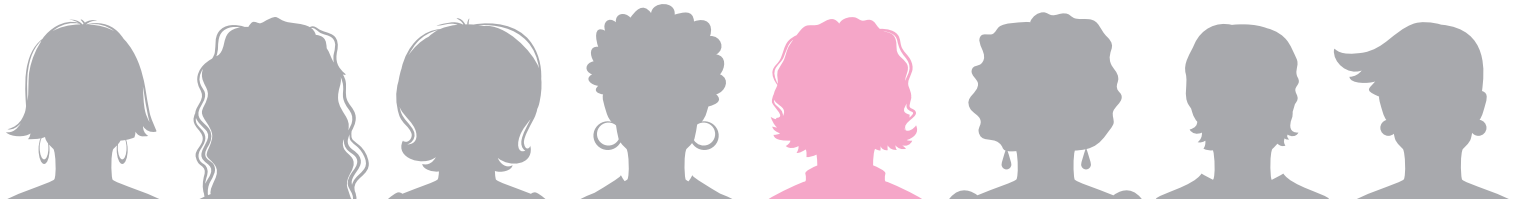
EATERIES & RESTAURANTS | **Dine-In or Takeout**

- Customize your menu
- Offer coupons and discounts
- Donate portion of sales



capitahealth

CENTER FOR
COMPREHENSIVE BREAST CARE



1 in 8 women will face a breast cancer diagnosis.