




CANCER CENTER



capitalhealth

CANCER CENTER

capitalhealth.org/cancer



Cancer can be a life altering illness. That's why the **Capital Health Cancer Center** offers compassionate, personalized care led by a closely integrated team of highly trained cancer specialists. Our physicians use their knowledge and experience to provide the most advanced cancer testing and treatment in one state-of-the-art location, Capital Health Medical Center – Hopewell.

At our center, a team of physicians from related fields such as medical oncology, radiation oncology, breast health surgery, neurosurgery, digestive health, radiology, plastic and reconstructive surgery, thoracic surgery, and hematological oncology and other specialties collaborate and provide patients with a network of physicians trained in the most complex oncology issues. Our medical expertise is matched only by the state-of-the-art technology and compassion that our team uses to diagnose and manage cancer.

Our center provides free valet parking and a designated parking lot just for oncology patients, access to amenities (including the Oasis Spa with a suite just for oncology patients, concierge services, multiple places to eat, and free wireless internet access), and a soothing environment that includes fireplace settings and a beautifully landscaped rooftop garden for respite and recovery.



A MULTIDISCIPLINARY APPROACH

Our team of physicians, nurses, therapists, social workers, nutritionists, rehabilitation staff, pharmacists, genetic counselors and clinical researchers creates a plan that ensures the best possible care for each patient. The team regularly discusses each patient's treatment, progress, and plans beyond discharge. By keeping all team members fully aware of the issues surrounding each patient's plan of care, we further ensure that you're getting the best possible care from our collaborative team effort.

MEDICAL ONCOLOGY

At Capital Health, our board certified medical oncologists collaborate with members of the overall oncology team to coordinate a patient's total care. The inpatient oncology units at Capital Health also provide specialty-trained care to patients and their families when a hospital stay is necessary. The nurses on the inpatient oncology units and two outpatient infusion centers are trained and certified in oncology and chemotherapy administration. For questions regarding medical oncology, please contact **609.537.7485**.

DIAGNOSTIC IMAGING & INTERVENTIONAL RADIOLOGY

We offer state-of-the-art diagnostic services, including molecular breast imaging, low-dose CT scans, full-field digital mammography and more. Our highly trained interventional radiologists also provide non-surgical procedures such as Xofigo® for prostate cancer and SIR-Spheres for liver cancer. Schedule tests by calling **609.394.6695**, fill out an online request at **capitalhealth.org/mytest**, or visit the registration area at our center.

RADIATION ONCOLOGY SERVICES

Our Radiation Oncology Department works closely with you and your referring physician to develop a care plan that will give you the best possible clinical outcome and address your personal needs. For information, call **609.303.4244**.

TrueBeam Linear Accelerator

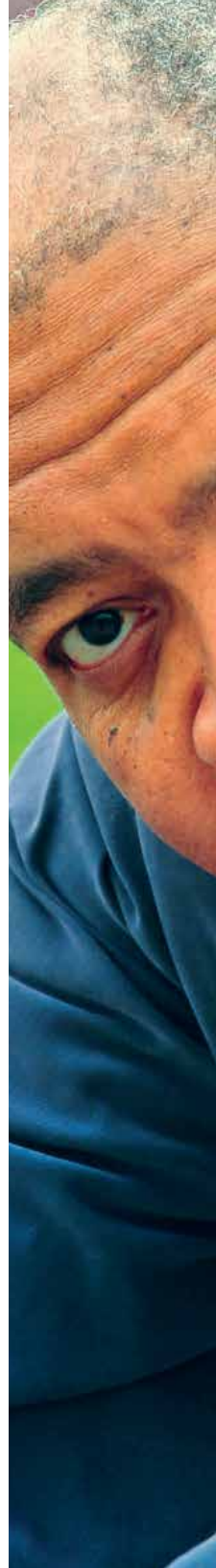
The TrueBeam™ Linear Accelerator allows us to manage challenging cancers with speed, comfort, and precision anywhere in the body (including the brain, spine, lung, liver, prostate, abdomen, pelvis, breast, head and neck). It can perform traditional 3D conformal radiation therapy, intensity modulated radiation therapy (IMRT), cone beam CT scans, RapidArc® radiotherapy, and stereotactic radiosurgery.

CyberKnife® Robotic Radiosurgery System

The CyberKnife System provides a non-surgical option for treating tumors in the brain, spine, lung, liver, pancreas, prostate and other areas. The system delivers high dose radiation to tumors with extreme accuracy, and our clinical research protocols provide access to some of the most advanced treatment strategies in the field of CyberKnife radiosurgery. For information, visit **capitalcyberknife.com** or call **609.303.4565**.

High Dose Rate (HDR) Radiation Therapy

HDR offers additional treatment options as it differs from traditional modalities. HDR treats cancer by placing radioactive sources directly into or next to the cancer, which enables our staff to deliver a high dose with minimal impact to surrounding healthy tissue. HDR has proven to be a successful treatment for cancers of the prostate, cervix, endometrium, breast, skin, bronchus, esophagus, head and neck, and soft tissue sarcoma.





da Vinci® SURGICAL SYSTEM

The da Vinci® System is currently being used as a minimally invasive option for prostate and kidney cancer. The da Vinci combines a surgeon's skill and expertise with a robot's precision to offer patients less pain, shorter hospital stays, and faster recoveries.

PROGRAMS AND SERVICES

Oncology Social Work

Our social workers assist patients, family members, and significant others with emotional issues as well as financial and practical needs related to cancer diagnosis and treatment.

Call **609.303.4336** for a social worker at Capital Health Medical Center – Hopewell.

Nutrition Counseling

A registered dietitian will assess your nutrition needs and provide individualized counseling at every stage of your treatment. Proper nutrition can improve your energy and help manage the side effects of cancer treatment. Call **609.303.4244** if you're receiving treatment and would like to schedule an appointment.

Lymphedema Management Program

Lymphedema is an accumulation of lymphatic fluid that causes abnormal swelling of the arms, legs, breast, abdomen, neck or head. If you notice persistent swelling associated with your cancer treatment or from the progression of your disease, it is very important that you seek immediate medical advice to help reduce the swelling. Call **609.303.4700**.

Palliative Care

Palliative care focuses on the physical, emotional and spiritual needs of patients and their families during a serious illness. At Capital Health, we offer a collaboration of physicians, physician extenders, nurses, social workers, case managers, pharmacists, complementary medicine providers, and chaplains. Call **609.537.7225**.

Hyperbaric Oxygen Therapy

Studies show that hyperbaric oxygen therapy can help some patients who experience complications long after undergoing radiation therapy. Call **609.303.4177** to schedule an appointment.

Support Groups

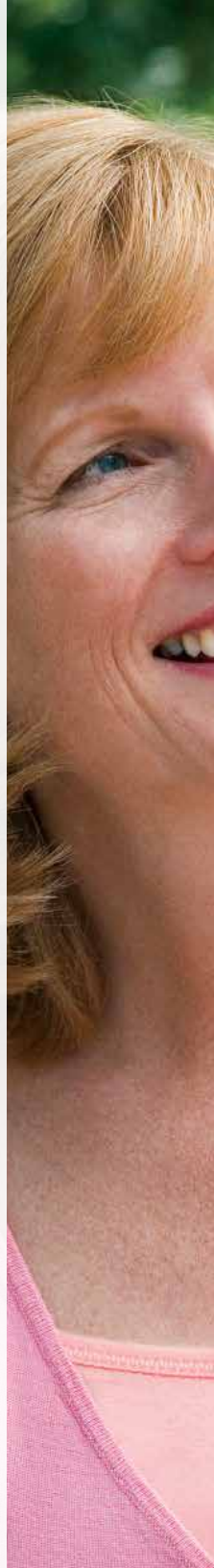
Capital Health offers a variety of support group meetings for people with cancer and their families. For information about our breast cancer support group, prostate support group, or others, call **609.537.7485**.

Clinical Trials

Clinical trials offer patients the very latest in cancer care. We participate in many National Cancer Institute and Pharmaceutical Phase III clinical trials and initiate our own clinical trials. For information, call **609.537.7042**.

Breast Health Nurse Navigator

Our breast health nurse navigator is a nurse specially trained to coordinate the clinical, educational and supportive needs of individuals who are either facing a possible breast cancer diagnosis or newly diagnosed with breast cancer. For information, call **609.537.7485**.





GI Health Nurse Navigator

Our GI health nurse navigator is a nurse specially trained to assist individuals dealing with a cancer diagnosis of their GI (digestive) tract. She can help coordinate care and assist with education and support needs. Call **609.303.4503**.

Genetic Counseling, Cancer Risk Assessment

If you have a family history of cancer, our cancer genetics program offers hereditary cancer risk assessment, counseling, and testing by certified genetic counselors. Call **609.537.7043**.

Survivorship Program

Starting at diagnosis, you are a survivor. Our program counters the powerlessness that people normally feel when diagnosed with cancer by developing the strengths and strategies to face their cancer-related problems. Call **609.537.7485**.

Lung CT Screening Program

Our Lung CT Screening Program is offered to current and former smokers. Studies show that extremely low-dose CT (LDCT) screening exams can lead to better outcomes for those at risk for lung cancer.

Visit **capitalhealth.org/lungct** or call **1.844.303.LUNG (5864)**.

Oncology-Specific Rehabilitation

Our experienced therapists provide care that is unique to each individual, which may include energy conservation and fatigue management, supervised gentle strengthening, endurance training, balance training, pain relief, lymphedema therapy, manual therapy techniques, and speech and swallowing therapies. Call **609.303.4700**.

AWARDS & ACCREDITATIONS

At the Capital Health Cancer Center, we have received recognition for our high quality services from our colleagues in the medical community.

- We are a multiple recipient of the **Outstanding Achievement Award from the American College of Surgeons Commission on Cancer (CoC)**. The CoC also bestowed its highest accreditation for excellence to us for our cancer prevention, treatment and education programs — the **Three-Year Accreditation with Gold Commendation**.
- We received a three-year term of accreditation in radiation oncology by the **American College of Radiology (ACR)**.
- The ACR also designates our Women’s Imaging Center as a **Breast Imaging Center of Excellence**. The Center also earned ACR accreditation for mammography, stereotactic breast biopsy, breast ultrasound and ultrasound-guided breast biopsy.
- Capital Health’s Center for Comprehensive Breast Care is **accredited by the National Accreditation Program for Breast Centers (NAPBC), a program of the American College of Surgeons**.
- Our hospitals are accredited by The Joint Commission.
- Our nurses have received the **prestigious Magnet® recognition for Excellence in Nursing Service** four times from the American Nurses Credentialing Center.



Capital Health
Medical Center – Hopewell
One Capital Way
Pennington, New Jersey 08534

866.247.7037
capitalhealth.org/cancer