

**Jason N. Rogart, MD**  
 Director, Interventional  
 Gastroenterology and  
 Therapeutic Endoscopy  
 609.537.5000

Dr. Rogart received his medical degree from Brown University

/ Brown Medical School, and completed his internship and residency at Yale University. He completed his fellowship training in gastroenterology at Yale University, and subsequently completed a one-year fellowship in advanced therapeutic endoscopy at Thomas Jefferson University Hospital in Philadelphia. Dr. Rogart is board certified in gastroenterology and internal medicine.



**Francis E. Rosato, MD**  
 Director of Gastrointestinal  
 Surgery  
 609.537.6000

Dr. Rosato received his medical degree from Jefferson Medical College and completed his

internship/residency at Thomas Jefferson University Hospital. He completed his fellowship training in gastrointestinal surgery at the Hospital of University of Pennsylvania in Philadelphia. He is board certified in general surgery

**Our physicians pride themselves in providing collaborative care with patients' local gastroenterologists, oncologists, and primary care doctors. For those who wish to receive all their care at Capital Health, appointments with medical and radiation oncologists can also be arranged.**

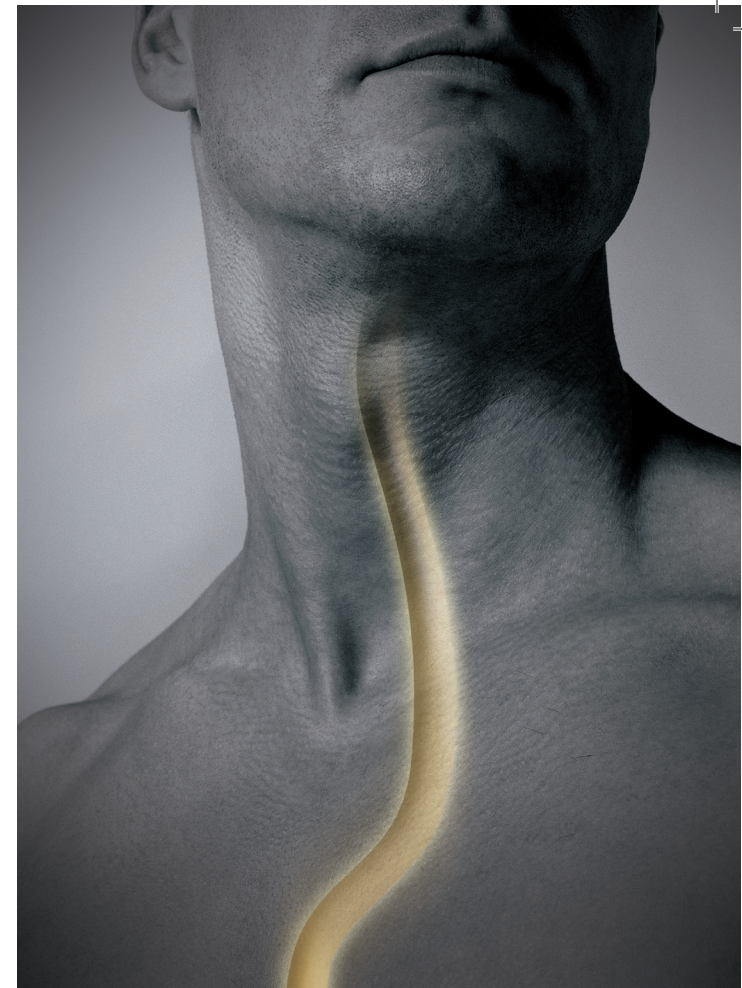
The Capital Health Barrett's Esophagus and Esophageal Cancer Program and the Center for Digestive Health are dedicated to providing advanced tertiary care for complex digestive illnesses, including esophageal cancer and disease, in a state-of-the-art facility conveniently located in central New Jersey.

To learn more about our approach, visit us online at [www.capitalhealthGI.com](http://www.capitalhealthGI.com) or call **609.537.5000**.



**capitalhealth**  
 Minds Advancing Medicine

One Capital Way  
 Pennington, NJ 08534  
 609.537.5000  
[capitalhealthGI.com](http://capitalhealthGI.com)



## BARRETT'S ESOPHAGUS AND ESOPHAGEAL CANCER PROGRAM

*Center for Digestive Health*



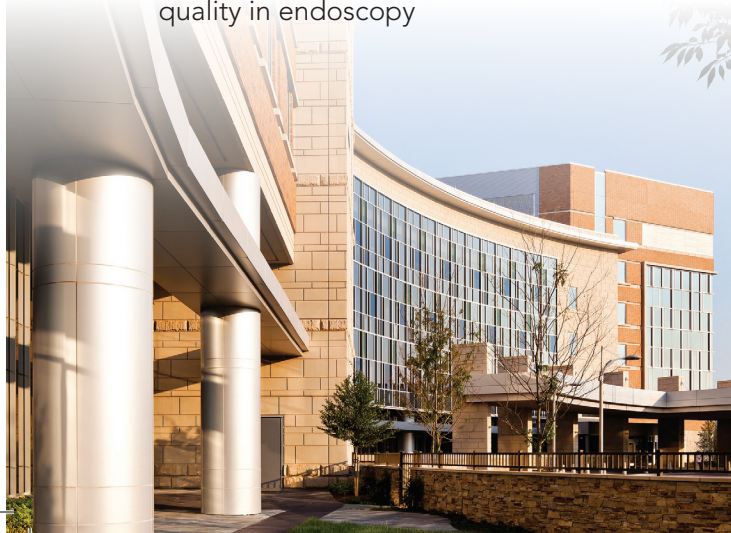
**capitalhealth**  
 Minds Advancing Medicine

[capitalhealthGI.com](http://capitalhealthGI.com)

Barrett's esophagus is a pre-cancerous condition that affects up to 3.5 million adult Americans. Many people have it, and do not know it. The most common risk factor is chronic acid reflux (also known as gastroesophageal reflux disease, or GERD). Patients with Barrett's can progress to esophageal cancer, and the annual incidence of esophageal cancer in the U.S. is increasing, with more than 17,000 cases diagnosed in 2012. Capital Health has assembled a team of expert physicians and support staff who specialize in the early diagnosis and cutting-edge treatment of Barrett's esophagus and esophageal cancer to achieve a more successful outcome for their patients.

#### Multidisciplinary and Collaborative Care for Your Patients

- Therapeutic endoscopy (Gastroenterology)
- Minimally invasive surgery
- Surgical oncology
- Gastrointestinal pathology
- Surgical critical care (ICU)
- Experienced MAGNET-designated nurses in a high-volume setting
- Recognized by the American Society for Gastrointestinal Endoscopy for promoting quality in endoscopy



#### Advanced Diagnosis and Treatment for Barrett's Esophagus, Esophageal Cancer, and Esophageal Disorders

- Barrett's Esophagus
  - Diagnosis: Endoscopic ultrasound, Narrow band imaging, Molecular/DNA analysis of Barrett's
  - Treatment: Radiofrequency ablation, Endoscopic mucosal resection
- Esophageal Cancer
  - Minimally invasive esophagectomy
  - Tri-modality therapy
  - Neoadjuvant protocol based treatment
- Refractory esophageal strictures
- Esophageal perforations or leaks
- Laparoscopic anti-reflux surgery
- Endoscopic and laparoscopic achalasia management
- Laparoscopic hiatal hernia or para-esophageal hernia repair

#### With our program, you can count on:

- 24/7 access for direct physician to physician referrals
  - GI therapeutic endoscopy: 609.537.5000
  - GI/minimally-invasive surgery: 609.537.6000
- Hassle-free system for hospital inpatient transfers to Capital Health, as well as timely outpatient appointments
- Coordinated care with the most innovative diagnostic and therapeutic technology and techniques available
- Ongoing communication and a proven history of directing patients back to referring physicians
- Referrals can also be faxed to 609.537.5050 (GI/therapeutic endoscopy), 609.537.6002 (surgery), or 609.537.6251 (GI pathology).

#### PHYSICIAN BIOS



**Joshua Cantor, MD**  
Fellowship-Trained  
Gastrointestinal Pathologist  
609.303.4019

Dr. Cantor received his medical degree from Jefferson Medical College, and completed his pathology residency at Thomas Jefferson University Hospital. Dr. Cantor then completed two fellowships, in surgical pathology and gastrointestinal, pancreaticobiliary, and hepatopathology, at the Hospital of the University of Pennsylvania.



**Christopher J. Gannon, MD**  
Fellowship-Trained Surgical  
Oncologist  
609.537.6000

Dr. Gannon received his medical degree from Columbia University College of Physicians and Surgeons. He completed his general surgery residency at the University of Maryland Medical Center in Baltimore, and his surgical oncology fellowship at M.D. Anderson Cancer Center in Houston, Texas. He is board certified in general surgery.



**Steven A. Johnson, MD**  
Surgical Intensive Care Specialist  
609.537.6000

Dr. Johnson received his medical degree from Thomas Jefferson University's Jefferson Medical College and completed his internship and residency in general surgery at Thomas Jefferson University Hospital. He completed his fellowship training in trauma and surgical critical care at the R. Adams Cowley Shock Trauma Center, University of Maryland, in Baltimore. He is board certified in general surgery and critical care.